



# Temple Beth Shalom *Scroll*

VOLUME 37, NUMBER 6 • 670 HIGHLAND AVENUE • NEEDHAM, MA 02494 • FEBRUARY 2010



TEMPLE BETH SHALOM GOES ...

## BACK TO THE PURIM

WE PARTIED WITH THE BEATLES... We Celebrated in the 70's  
NOW IT'S TIME TO JOURNEY BACK TO...



## THE 1980'S



**BACK TO THE 80'S PURIM SHPIEL - ONLY FOR ADULTS -**  
**Saturday, February 27<sup>th</sup> @ 7:30 PM** - A celebration of the holiday through a show, song, and much silliness...this year it is for adults only and will feature appetizers, desserts, and a cash bar! **REGISTRATION DETAILS APPEAR INSIDE.** Join us for a night of fun and laughs!

**ADULT MEGILLAH READING - Sunday, February 28<sup>th</sup> @ 9:00 AM**  
Join us as we explore the entire story of Purim in the Megillah. Groggers, and great discussion will help us to discover modern meaning and insight.

**KIDS' PURIM SHOWS - Sunday, February 28<sup>th</sup> before the Carnival**  
Look inside The Scroll for details!

**PURIM CARNIVAL - Sunday, February 28<sup>th</sup> @ 1:15 PM** - Fun and games for children and their families!

### *Looking Inside*

Shabbat Services .....	2
B'nei Mitzvah .....	2
Project Ezra Thanks! .....	2
CPR & AED Training .....	2
From Rabbi Perlman .....	3
JVS Career Moves.....	3
From Rabbi Markley.....	4
Purim at TBS.....	4
President's Message.....	5
Bagels and Book Talk .....	5
Garden Club.....	6
Needham's Art in Bloom ....	6
Triple Chai Film Night .....	6
Tot Shabbat .....	6
Religious School.....	7
Sisterhood.....	8
Brotherhood .....	9
CJP Economic Response ....	9
Children's Center.....	10
Social Action .....	10
Taste of the Town .....	11
Celebration of Healing .....	11
Sanctuary Memorial Boards	11
Who's Who at TBS .....	12
Yahrzeits .....	12
Library .....	12
Sisterhood Rosh Chodesh... 13	
Handy TBS.....	13
College Night .....	13
Ask the Rabbis.....	13
Contributions.....	14-15
Sharing our Lives .....	15
Chesed Committee Sign-up .	17
Temple Calendar .....	20

## From Rabbi Perlman



Though a time of great joy, revelry, and fun, not surprisingly Purim is also a time when we are called upon to turn towards those in need – to help those who are less able to celebrate at this season to do so.

The Book of Esther says it all: “Observe the fourteenth and fifteenth days of (the Hebrew month of) Adar, every year – the same days on which the Jews enjoyed relief from their foes and the same month which had been transformed for them from one of grief and mourning to one of festive joy... Observe them as days of feasting and merry making, and as an occasion for sending gifts to the poor.”

The holiday of Purim represents an occasion for added celebration – rejoicing above-and-beyond what might be considered “normal.” This is the reason that it is traditional to engage in a carnival-esque spirit at the temple and, in Israel, in the streets. Beth Shalom’s own “80’s Purim” fun is our congregation’s way of making this mitzvah real in our temple home. Interestingly, our rabbis considered the tzedakah obligation of Purim in this same “above-and-beyond” light: that while the obligation to help those in need is one that is upon us every day, Purim places an additional tzedakah obligation upon us. “*Matanot L’Evyonim*” – literally, “gifts for the poor” is Jewish tradition’s way of telling us that just as the Jews of Purim story were saved on Purim day, we too must reach out, on Purim day, to help others.

And so, at this season, while we continue to do all that we can to help those in

need, Temple Beth Shalom is joining together with fifty other Jewish organizations, schools, and congregations to specifically help the poor amongst us on this coming day of Purim.

“Yad Chessed” is an organization that was founded in 1989 to fill a gap in the greater Boston Jewish community by providing assistance to people who have a financial emergency and have nowhere to go for help. “Yad Chessed” now distributes over \$250,000 annually in emergency aid, ongoing food and clothing assistance, and special holiday allocations—as well as \$75,000 in interest-free loans—to more than 1,000 individuals in the greater Boston Jewish community. The statistics are telling:

- Approximately 8% of the greater Boston Jewish community is in poverty (8,400 people)
- 53% are elderly (4,500 people), 47% are non-elderly (3,900)
- A significant number of those living in poverty are between the ages of 30 and 59, live alone, and are unemployed; 14% of income poor households include children
- 258 children were matched or are waiting to be matched at Jewish Big Brother – Big Sister (JBBBS). Half come from income-poor families; 35% of the JBBBS caseload receives public assistance.

The “Yad Chessed” Purim Project to fulfill the mitzvah of “*Matanot L’Evyonim*” is simple. The program is unique in that it enables the “gift” to be given by those living in the Boston Jewish community specifically on Purim day. Prior to Purim, over 200 people-in-need

throughout our area will receive special “gift vouchers” that can be redeemed at the Butcherie. The vouchers will not have any value assigned to them because the total amount of funds will not yet have been collected. Between now and Purim day, participating congregations and organizations will collect donations. On Purim morning, rabbis and others community leaders will call “Yad Chessed” to let them know how much has been collected, thereby assigning specific value to each voucher and making it a “gift on Purim.” “Yad Chessed” will then contact the Butcherie to let them know how much each voucher is worth so that those who come for food will be able to receive. These vouchers will be good for several months so that the people who receive them can use them when they are most beneficial. If preferred, the recipient may turn his/her voucher in to “Yad Chessed” for a gift card from either Stop & Shop, Shaw’s, or Star Market.

In 2009, “Yad Chessed” collected nearly \$54,000 from 40 organizations in the greater Boston Jewish community. Because the Butcherie gave Yad Chessed a discount on the Purim vouchers, Yad Chessed was able to distribute over \$63,000 in food assistance to 350 needy Jewish families!

Temple Beth Shalom’s participation in the community-wide “*Matanot L’Evyonim*” project will run until Purim morning, Sunday, February 28. To fulfill this mitzvah, please send your contribution (even the smallest amount will be helpful) to my attention at TBS, 670 Highland Avenue, Needham, MA 02494. Checks may be made payable to “Yad Chessed.” On Purim morning, I will call “Yad Chessed” and let them know the total amount of our congregation’s participation, thereby completing the “mitzvah-link.”

For more information about the work of “Yad Chessed,” please visit their website at [www.yadchedded.org](http://www.yadchedded.org).

I hope that you and those closest to you have a most wonderful and joyous holiday!

### CAREER MOVES JOB CLUB

Sponsored by the Jewish Vocational Services and supported by the Combined Jewish Philanthropies, “Jobs Clubs” are weekly job search support and networking groups open to all professionals who are job seekers and career changers. Participants come to Job Clubs to share ideas, information, contacts, and strategies. There are several “Job Club” sites throughout the Boston area. Temple Beth Shalom is proud to be hosting this program that runs weekly. The program is facilitated by Career Coach and TBS member, Debbie Lipsett. For more information and/or to register, please contact Debbie Lipsett at 617-965-7940 or at [dlipsett@jvs-boston.org](mailto:dlipsett@jvs-boston.org).



## From Rabbi Markley



I sometimes ask adults in our community which Jewish holiday was, in its original conception, most intended for children. SPOILER ALERT... the answer is Passover;

the Seder is meant to be the experiential Jewish learning environment par excellence for kids through its storytelling, games, great tastes, activities, songs, loving family, and lots of great questions. The two responses I most frequently receive to this question, however, are “Chanukah,” and “Purim.” Chanukah’s a good guess, but it appears child-focused largely because of the gift-giving custom that has developed here in America over the past several decades. Traditionally, this was a family holiday (as they all are) to be sure, but not particularly “child-centric.” Purim is also a fair guess given all of the costume

dress-up, noise making, and those yummy hamentashen cookies. Purim is, however, the Jewish holiday most intended for adults! Its core story is the Book of Esther which is so outlandish in its brazen humor that it qualifies as the only Biblical book that could have been authored by a writer from National Lampoon. On Purim, we adults are encouraged to turn our worlds upside down, to make a little fun of ourselves (come see our clergy and staff fulfill this mitzvah at the Purim Shpiel), and to experience intoxicating revelry!

For all of these reasons we have chosen to make our evening Purim Shpiel an “adults only” experience this year. On Saturday, February 27 (Erev Purim), at 7:30 p.m., we will come together as a “grownup” community for an evening of “schmoozing” with friends, new and old, noshing on appetizers and dessert (including hamentaschen, of course), fun, and merriment. Those who attend

will be treated to a Purim show starring clergy, staff, and lay leaders which will take us on a musical journey “Back to the 80’s” all while retelling the Purim story with much hilarity. We hope that you will join us for this celebration and that you’ll dress in your retro 80’s attire... you know you’ve still got stuff in the back of your closet!

Clearly, we want to make sure that we continue to create a fun and festive Purim for our children as well, and Sunday morning, February 28, will feature two “child-friendly” versions of our 80’s Purim show for children ages 2-5 (including Kindergarten) and then for children in grades 1-5. Please see details below. Of course, we will hold our annual Purim Carnival as well, and for the most studious among us, an adult Megillah reading on Sunday morning at 9:00 a.m. I sincerely hope that you will join in the Purim fun this year!

### **PURIM AT TEMPLE BETH SHALOM**

#### **“BACK TO THE 80’S” PURIM SHPIEL (show) FOR ADULTS ONLY**

**Saturday, February 27 at 7:30 p.m. –** This year’s Purim show will feature the music of the 80’s with lyrics rewritten to tell the Purim story. Appetizers and dessert foods will be served, and a “cash bar” will be available. The cost is \$15 per person, and the registration form appears below. You can also register on the TBS website at [www.tbsneedham.org](http://www.tbsneedham.org). This will be a fantastic night **for adults only** this year, with time for schmoozing with friends, much revelry, many Purim antics, and lots of fun! All are invited to dress up for the occasion... bonus mitzvah points for those in retro 80’s attire!

#### **ADULT MEGILLAH READING – Sunday, February 28 at 9:00 a.m. -**

Join us in our Community Room as we share and explore the entire story of Esther, Mordechai, and Haman as it appears in the Megillah. Our English reading will include questions, groggers, and discussion of key aspects of the story that will help us to discover modern meaning and insight.

**KIDS’ PURIM SHOWS – Sunday, February 28 -** Because our evening Purim show is for adults only this year, we will be doing a kids-friendly version of our “Back to the 80’s” Purim celebration (complete with clergy, staff, and faculty in great 80’s costumes!) on Sunday morning preceding our carnival.

**12:15 - 12:45 p.m.** in our Sanctuary – A show for our children ages 2-5 (including those in Kindergarten) and their families. These youngest children will then have some time to themselves in the Carnival from 12:45-1:15 PM.

**12:45 - 1:15 p.m.** in our Sanctuary – A show for our children in grades 1-5 and their families. Regardless of whether or not a child is in religious school during these hours, all are invited to join in this Purim show and megillah retelling.

**PURIM CARNIVAL – Sunday, February 28 - 1:15 p.m.–** Fun and games for children and their families!

### **Adult Purim Shpiel Registration Form**

Attendees’ Names: \_\_\_\_\_ E-mail Address: \_\_\_\_\_

Phone # and Alternate Phone #: \_\_\_\_\_

Please include a check made payable to “TBS” for \$15 per adult attending, and return to the TBS Office, attn: “Purim Shpiel”, 670 Highland Ave., Needham, MA 02494 by Friday, February 12. **\*\*You can also register online at [www.tbsneedham.org](http://www.tbsneedham.org).**\*\*

## President's Message



As we began 2010, I asked us to consider making a 'TBS Resolution' – considering steps we might take in together building our kehillah kedoshah – our sacred community.

As part of my daughter Annie's preparations for becoming a Bat Mitzvah this April, she's been teaching preschool children about g'millut chasadim, acts of loving kindness. One lesson centered around a beautiful children's book called **Heartprints**, a line of which reads: "Sometimes you'll reach out to someone in strife and do something thoughtful that changes a life". Wouldn't it be wonderful if we could both receive and offer *heartprints* here at Beth Shalom?

The gateways for stepping into our community are many. You'll see in this edition of the *Scroll*, the Board of Trustees list of those currently leading our committees, arms and initiatives. If you're interested in learning more about any of these listings, I encourage you to reach out to our Board members and to me directly. In addition to these areas of congregational life, there are many 'little' opportunities for connection that arise in our TBS community each day. These are moments in which others reach out to us, and moments in which we take a step 'in' – a step closer to the center of congregational life. Consider these questions for yourself:

- What brought you to TBS? Do those same things keep you engaged here now,

or have you found new gateways – new avenues for involvement?

- Over the past 6 months have you met 2 or 3 new people at TBS? What allowed for this?
- Have you recently had a moment at TBS in which you asked someone "how are you?" and really listened to a true accounting of how they are? ...and conversely, have you shared with someone at TBS something really meaningful to you?
- Has someone in our community reached out to you, offered you guidance, direction, insight?
- Outside of a major lifecycle moment, have you had an experience at TBS that you'd like to have once again? How might you make that happen?
- When you're having a difficult day, is there something at Beth Shalom – the building, the sanctuary, a person, a service, a moment – that could offer you comfort? Would you seek it out?
- Have you learned something at TBS that's really meaningful, enriching, stimulating to you?

And...if the answer is no to some or many of these, is that OK? And why is that? What are you expecting or wanting to find in our congregation?

This is just a suggestion for beginning a process of reflection about your relationship with TBS. It parallels the process in which our professional staff and lay leaders participate, called "Cheshbon HaBrit" – an accounting of the covenant, in which there is a consideration of annual priorities, goals and the pathways to reaching them. Similarly, our Executive Committees engages in "Cheshbon Avodah" – an accounting of our sacred work – reflecting on our personal, relational, spiritual and task-related experiences and growth. In fact, every one of us in this Beth Shalom family can consider how to deepen our relationships with Judaism and with our synagogue community.

Membership at Temple Beth Shalom is not meant to be like ordering off of a menu, regardless of how delicious and 'wholesome' the offerings may be; instead it's about sharing meaningful connections with others who are also seeking nourishment at this sacred 'restaurant'. Here we all have a chance at a *heartprint* - an opportunity to give and to receive from this community.

L'Shalom  
Beth

Please join us for our annual

## Bagels and Book Talk

Temple Beth Shalom

670 Highland Avenue Needham, MA

# TOLSTOY LIED

*a love story*

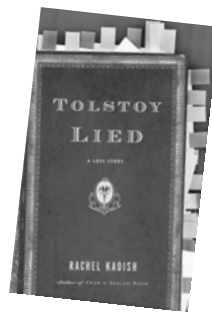
A Reading and Intriguing Presentation by the author



### Rachel Kadish

Ms. Kadish will talk about the Jewish themes of her work, and why she thinks it's important for writers to be wary of the 'Jewish writer' label.

Advanced Reading Recommended: Book Signing at Event  
Available in paperback at local book sellers and Amazon.com



**When:** Sunday, February 7

**Time:** 9:00 - 11:00 am

**Refreshments:** Bagels, and... will be served

**Cost:** This exciting event is **free of charge**, but **Please RSVP no later than January 26** to June Atkind at [junatkind@aol.com](mailto:junatkind@aol.com).

"*TOLSTOY LIED* is a brilliant novel, one of the wisest books I've read about love."

—Carol Gilligan, author of *In A Different Voice* and *The Birth of Pleasure*

"*TOLSTOY LIED* is a love story with heft, weight, and dazzle.

Rachel Kadish has written an infectious enjoyable novel."

—Tova Mirvis, author of *The Ladies Auxiliary* and *The Outside World*

**For anyone who cares about happiness and enjoys great writing!**

# Garden Club

## Essential Dates

**Tuesday, February 2 – Workshop at 10:00 a.m. and Luncheon at 12:00 noon**  
**Saturday and Sunday, March 6 & 7 – Needham's 2nd Art in Bloom, Needham Public Library.**  
**All are welcome.**

On February 2, Beth Shalom Garden Club will continue our celebration of five decades as a federated garden club in a workshop and luncheon. At the workshop Sue Kaplan will lead us into inter-

preting art with flowers in styles over the past five decades in preparation for Needham's 2nd Art in Bloom. Sue's extraordinary talent as a designer and teacher will enable us to create centerpieces that bloom with spectacular color and artistry and will then adorn our tables for the luncheon that follows. During the workshop members will be given a randomly selected photo of a high school student's artwork that our members will then interpret in a floral arrangement for

Needham's 2nd Art in Bloom exhibit in March.

For the luncheon everyone will bring a favorite "decade delight" from the past fifty years in keeping with our theme of celebrating our golden anniversary as a federated garden club. Memorabilia of past Beth Shalom Garden Club events will decorate Simon Hall as we enjoy our tasty menus, reminisce about the past fifty years, and look forward to the next fifty.

In addition to the February 2 workshop, everyone in Beth Shalom Garden Club will be spending the month of February gearing up for Needham's 2nd Art in Bloom at the Needham Public Library. Every member will be participating in some way to prepare for this fantastic event. High school art accompanied by their floral interpretations will be on display throughout the library. At last year's exhibit our garden club created over thirty floral arrangements to reflect the high school students' artwork. We hope to do the same this year. Funding for this year's exhibit was made possible by a grant from the Dedham Institute for Savings. We hope that you will have a chance to see this year's art and floral designs that will be created by Needham's own high school students and Beth Shalom Garden Club members. Admission is free and open to the public.

See you at the library on March 6 & 7. You are in for a treat!

Carol Gershman  
President

## Mark Your Calendar!

# Needham's Art in Bloom 2010

## Student Artwork with Floral Interpretations



- Entertaining event for ages 2-102
- Art by talented Needham High School students
- Floral designs by Beth Shalom Garden Club

**Friday, March 5**  
Exhibits 1-5

**Needham HS Lobby**  
**Needham Senior Center**

**Saturday, March 6**  
Exhibits 1-30

**Needham Public Library**  
**9:00am - 5:00pm**

**Sunday, March 7**  
Exhibits 1-30

**Needham Public Library**  
**1:00pm-4:00pm**

*Sponsored by Dedham Institution for Savings Grant received by Beth Shalom Garden Club in collaboration with the Needham High School Visual Arts Department*

**Dedham Savings**  
Your Bank

## Triple Chai Film Night at TBS! Sunday, February 21 "O JERUSALEM"

On the streets of New York City in 1946, Jewish-American Bobby Goldman becomes best friends with Arab-Muslim Said Chahine. But when British-controlled Palestine erupts in war, these two intelligent and compassionate men will find themselves fighting on opposite sides of the historic battle for Jerusalem. This is an epic saga of conflict, courage, and the fiery dawn of the state of Israel.

**Movie Begins at 4:00 p.m., and pizza dinner will follow.**

**This event is \$10.00 per person for members of Triple Chai.**

Yes, I would love to attend Triple Chai Film Night

Cost: \$10.00 per person, and \$15.00 per person for non-members

Family Name: \_\_\_\_\_ Phone Number: \_\_\_\_\_

Names of Attending: \_\_\_\_\_ Total Enclosed: \_\_\_\_\_

Please return this form along with your check made payable to TBS/Triple Chai and return your reservation by February 12 to Paulyne Raemer, 120 Noanett Road, Needham, MA 02494. If you have any questions, please contact Paulyne at 781-444-8487



**Tot Shabbat**  
**Friday, February 26**  
**6:30 p.m.**

**in the Community Room**  
We look forward to having you join us for a warm, musical, interactive Shabbat Service for young families.



# Religious School



## SOCIAL ACTION . . . IN ACTION

Two or three times a year, students in grades 3 through 5 suspend all regular Hebrew and Judaica classes to participate in **Yom Chugim**, a day of choices, mixing and mingling with friends of different ages and learning in small groups about a



*Conflict Resolution Chug  
Working their way out of a Human Knot*

single theme of Jewish importance. During December, more than 180 students explored the value of social justice and how children, even the youngest of our families, can make a positive difference in our world. Under the energetic and creative leadership of Margo Porter and Jennifer Garf, students chose two electives from amongst Animal Protection, Caring and Kindness for Children, Homelessness, Human Rights, Protection of the Environment, Caring and Kindness for Elders and Conflict Resolution.

Students prepared lasagnas and salads for families currently living at Sojourner House in Roxbury, whose "mission is to provide shelter, structure,

strength, inspiration to women and families in need so they are prepared to lead responsible and meaningful lives." The students not only provided the recipe along with the food, but also documented the nutritional value and cost per serving of this meal. The lesson learned about Homelessness was that according to our sages, "It is not up to you to complete the work, yet you are not free to desist from it." Even though one of us or even a small group of us might not end hunger and homelessness in the world, we are commanded to do our part in helping to solve the challenges each form of poverty brings.

Many children worked for animal protection by making over 100 fleece dog toys and dozens of nutritious dog biscuits. Two families who had both adult volunteers and children working in this chug, were excited to extend their efforts by visiting a local shelter and delivering the day's products. On the second day of electives, Danielle Landry, the Needham Animal Control Officer, visited with our students and engaged them in a very lively discussion about how we can not only help the animals that are part of our families but also those in shelters and the wild creatures that live in our neighborhoods. Danielle was thrilled to receive the many toys and biscuits that the children made and has delivered them to the shelters she works with. The lesson learned about animals is the prohibition of cruelty to animals, commanded acts of compassion and the proper methods of treatment of non-human life.

**Hiddur penei zaken**, honoring the elder, was another lesson learned. "The test of a people is how it behaves toward the old." There are Talmudic rulings (ancient Jewish texts) on preserving societal peace, *darchei shalom*, including inter-ethnic relations and students worked on ways to connect with



*Logan and Ben presenting Danielle Landry, the  
Needham Animal Control Officer,  
with the dog biscuits and toys they created.*

each other through games of conflict resolution. Children expressed their compassion especially for those who are vulnerable by making fleece heart-shaped and lion-faced pillows for the Ronald McDonald House and scented soaps for elderly Needham residents. **Yom Chugim-Social Justice**, the Days of Electives, were powerful for those who assisted and those who learned. Thank you to all who supported these great experiences!

Special thanks to: Sarah Mesnik, Jacquie Sherman, Karen Resnic, Sandy Cisternelli, Diane Lunder, Beth Cohen, Amy Warner, Martha Cohen-Barrett, Andrea Sheiffer, Jen Lourie, Jane Evans, Linda Mesnik, Margaret McConchie, Amy Finn, Robin Arvin, Leslie Needleman, Sandra Beutel, Daphne Davidson, Sandy Jacobs and Amy Fradkin as well as all of our teaching staff.

*L'shalom,  
Sandy*

## New for Fall 2010

TBS Religious School will be offering a Kindergarten class on Wednesday afternoons from noon - 2:30 p.m.

The curriculum will be modeled on the Sunday Kindergarten which will also be offered.

As you consider your plans for afterschool care next fall, please take into account this great opportunity to join other families in this wonderful new experience!



**Save The Date!**  
**TBS Family Kallah**  
**Friday, April 30 - Sunday, May 2**  
**Camp Eisner, Great Barrington, MA**  
*More information will follow!*

# Sisterhood

On Sunday, February 7, Sisterhood will be holding a Rosh Chodesh Group from 3:00-4:30 pm. Yes, I know this is Super Bowl Sunday, however since kickoff isn't until 6:30 pm, I hope you'll consider joining us for this pre-party, a special female-centered observance of the new month. It will be a great antidote for what is perhaps one of the most masculine "holidays" of the year! Ok, you may be saying, but what is Rosh Chodesh anyway? Rosh Chodesh is the celebration of the beginning of each month in the Jewish calendar, based on the 29 ½ day lunar cycle, which has blossomed into a celebration of women and femininity.

The connection between Rosh Chodesh and women dates back to biblical times. According to a tradition in one Midrashic work, the women refused to participate in the sin of the Golden Calf, and were rewarded with Rosh Chodesh. Perhaps more obvious is the similarity between the lunar cycle and women's own bodily cycles. The beginning of a new month and a new lunar cycle brings a sense of renewal and rebirth that can be especially appreciated by women, as we too are renewed each month. The moon's phases teach that it is important to welcome periods of rest and retreat from which we may emerge renewed and refreshed.

Throughout Jewish history, the custom of not doing work on Rosh Chodesh has made it a natural time for women to gather together. While the details of such gatherings are uncertain, it is likely that these were occasions to share family news over coffee

and sweets. In some Sephardic societies, it was marked by the lighting of candles and a festive meal. Formal Rosh Chodesh groups are a more modern development.

While observances vary from group to group, many are centered around small gatherings of women meeting to celebrate both the new month and their lives as Jewish women. Groups engage in a wide variety of activities that center around issues important to Jewish women. Many explore spirituality, religious education, ritual, health issues, music, art and cooking. In this intimate gathering, you'll have the opportunity to create connections and foster relationships with other women in Sisterhood. To me, this epitomizes what Sisterhood is all about, as women of all ages can join together in something that is uniquely female. If you are new to Sisterhood, this can be a wonderful way to make connections in an intimate setting; if you are a Sisterhood veteran, Rosh Chodesh can be an opportunity to reconnect with each other in a time and space apart from the pace of our frantic lives.

I look forward to seeing you all on February 7 as we celebrate the beginning of the month of Adar with some Tu B'Shvat snacks and a discussion of the Book of Judith, the story of a beautiful Jewish heroine who uses her womanly attributes to save her people – this should be quite a fascinating meeting!

In Sisterhood,  
Judy Ravech  
President

**Thanks to:** Our dedicated members who helped plan our many events in January including:

**Habanot Nechama Concert:** Susan Patkin



Please join the members of  
The Sisterhood of Temple Beth Shalom  
Friday, March 26 at 7:45 pm

For the Annual  
Sisterhood Shabbat  
A warm & inspiring  
service

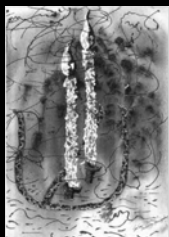
Rabbi Michele Lenke  
will be offering the  
D'var Torah

Dinner will precede  
the service.

Sign-up information will be  
available next month.

All members of our community are  
warmly welcome.

For more information, contact  
Betty Weiner - betts235@yahoo.com



## Sisterhood Book Club

Join us on Tuesday, March 9 at 7:30 pm to discuss

### The Faith Club

**The Faith Club** is the true story of its three authors

Ranya Idliby, Suzanne Oliver, and Priscilla Warner, who got together in the wake of 9/11, when Idliby, an American Muslim of Palestinian descent, sought out fellow mothers—one Jew and one Christian—to write a children's book on the commonalities among their traditions. They come to call their group a "faith club" and, over time, midwife each other into stronger belief in their own religions. The book has been praised as "a page-turning read" due to the women's honesty and willingness to pull no punches.

To RSVP and to learn location, call Gail Lustig at 781-444-7508, or [gaillustig@rcn.com](mailto:gaillustig@rcn.com).



**Mah Jongg Tournament:** Aimee Bierman  
**Casino Night;** Denise Goodman &  
Elyse Marsh.

Also, much gratitude to our fantastic **Spirituality Retreat Committee** who have invested tremendous energy and enthusiasm since last spring in planning this very special weekend. Chairs: Barbara Pack and Emily Aransky. Committee Members: Julie Bailit, Lisa Channen, Susan Patkin, Jane Spigle, Amy Willis as well as our spiritual advisors Emily Perlman and Rabbi Michele Lenke.

#### Essential Dates:

**Wednesday, February 3** – Come to the temple library at 7:30 pm for our monthly Board Meeting and you'll meet a welcoming group of dynamic women! All Sisterhood members are invited.

**Sunday, February 7** – Join us for Rosh Chodesh at 3:00 pm at the home of Trina Novak. Enjoy a spiritual and social gathering in an intimate setting designed to foster connections and relationships in Sisterhood. To RSVP or for more information, please contact Trina at [kermittf@rcn.com](mailto:kermittf@rcn.com).

**Tuesday, February 9** – Have a child heading to college soon? Join us for our annual College Night at 7:30 pm, and meet with college advisor Dr. Linda Shapiro to get all your questions answered. This helpful information session is open to the general public so bring your friends. Contact Ann Shuman at [ann.shuman@yahoo.com](mailto:ann.shuman@yahoo.com) with any questions.

**Thursday, February 25** – Back by popular demand, Sisterhood is pleased to present an "Ask the Rabbis" evening. We'll have the opportunity to chat informally with all three of our rabbis and ask them anything and everything! Join us for coffee and dessert at 7:30 pm. To RSVP, contact Magda Schmalz at [mkschmalz@yahoo.com](mailto:mkschmalz@yahoo.com).

**Sunday, February 28** – Sisterhood will once again sponsor the food concession at the temple's Purim Carnival; contact Amy Kaufman at [lancasterfran@gmail.com](mailto:lancasterfran@gmail.com) if you'd like to volunteer at this fun family event.

# Brotherhood

Dear Brothers,

As we near the end of football season and anticipate the Super Bowl, we can look back at our social action and event highlights for the first half of our calendar year.

One of our most successful events this year was our annual **Red Cross Blood Drive**. If you were there, you know how quickly and smoothly donors were received and how painless the entire process went. The team of workers from the Red Cross really stepped up their game and made donating easy. Thanks to all the pre-event planners and call volunteers, we were able to reserve 150 donor slots prior to the day of the drive which is a key logistical component to a successful event. Community publicity in the *Needham Times*, high visibility signage, and decent weather all helped to make this year's drive one of the most successful ever. A record tying 122 units of blood were donated with very little waiting around. The enthusiastic effort and leadership of Howard Ostroff, and our mass Brotherhood volunteer support, has really laid the groundwork for an even more successful

campaign next year and beyond. Thanks to everyone who contributed their time and especially those who donated blood.

Another memorable and successful event was our **4th Annual Brotherhood Retreat**. Located at a new site on Cape Cod, approximately 25 brothers along with Rabbis Jay and Todd were able to learn and bond through torah teachings and social interaction. We had a spirited topical discussion of Anti-Semitism through history and its latent and more visible stages. This fascinating program led by local ADL leadership as well as TBS members, included shared personal experiences. It was truly a memorable and unique program event. Our shared experiences along with shared meals and laughs in a relaxed and spiritual environment created greater friendships and closer brotherhood bonds. Every year our retreat seems to get bigger and better, and we are all anticipating another great event next October.

Brother is proud to be a part of many other events as well as an important service arm of the temple. Last month we held our second bottle redemption day of

the year and continue to make the most of these types of fund raising opportunities. We also hosted the **Annual Rabbi's Breakfast** and co-sponsored a very fun and successful **Casino Night** with our very impressive and capable Sisterhood.

Thanks to all who came out and participated and volunteered in these events.

Maybe Spring isn't right around the corner, but softball rosters and the new **TBS Golf League** teams are being finalized. Don't miss out! Contact Jon Cohan at [joncoco@yahoo.com](mailto:joncoco@yahoo.com) to join the fun.

## Upcoming Dates:

**Tuesday, February 2 at 7:00 p.m.**

Brotherhood Board Meeting - TBS Library  
All brothers welcome

**Sunday, February 28 Purim Carnival**

Simon Hall - Volunteers needed

**Friday, March 19 - Brotherhood Shabbat Service**

Presentation of the Mark Comras Award

**Sunday, May 16 - Habitat for Humanity Day**

Please contact Michael Cohen at [mbcwc@verizon.net](mailto:mbcwc@verizon.net) to lend a hand

Jim Winterman

For the second year, CJP is partnering with the Jim Joseph Foundation to provide emergency education grants for Jewish families with demonstrated need.

If you live within CJP's geographic service area, your family may be eligible.

As part of CJP's Economic Response, applications for tuition subsidies are now available for families who wish to send their children to Jewish preschools and Jewish overnight camps for the 2010 camp season and the 2010-2011 school year.

This funding enables Jewish day schools and high schools to increase their financial aid awards for the 2010-2011 school year.

All 13 of Greater Boston's day schools will receive this funding.

There is no special application; every family who completes their school's financial aid application will be considered for these grants.

Families may qualify for tuition subsidies for more than one child, and in more than one program area (preschool, day school or overnight camp).

These subsidies will not affect other financial aid awards.

 Economic Response



## *The Brotherhood is looking for golfers.*

*This Spring we'll be forming a golf league.*

*This will likely be a friendly par 3 game (maybe at Lost Brook in Norwood).*

*To help us determine if this is a go, please email Jon Cohan at [joncoco@yahoo.com](mailto:joncoco@yahoo.com) with your interest and the best days/times for you to play.*

*We'd like to kick off our first season with 4 teams of 4.*



## Children's Center



This past fall, a group of over a dozen Children's Center parents, along with Rabbi Todd and I, met on a regular basis for a book group to read Dr. Wendy Mogel's *The Blessing of a Skinned*

*Knee*. This group of mothers and fathers shared their reflections from the book, their experiences as parents, their insights and suggestions. As this all was happening, a great sense of community, belonging, camaraderie was forming. We all had a shared sense of vision and hope for our children, which included instilling within them the spirit of kindness, fairness, respect, and resiliency.

For our last meeting, we were privileged to have Dr. Bob Brooks, one of our own Temple Beth Shalom members, share his insights. Dr. Brooks has not only met Dr. Mogel, but is also an expert on child development. His book *Raising Resilient Children* is just one of many of his works on this subject. The subtitle of this particular book is equally compelling for us: "Fostering strength, hope and

optimism in your child." We had a fascinating discussion. And, if I had my druthers, it would have gone on for hours on end! However, parents needed to pick up their children, I needed to return to the Children's Center, and we needed to let Dr. Brooks return to his work and family!

As Dr. Brooks states, it is critical that our children be able to "deal more effectively with stress and pressure, to cope with everyday challenges, to bounce back from disappointments, adversity, and trauma, to develop clear and realistic goals, to solve problems, to relate comfortable with others, and to treat oneself and others with respect." This also happens to be what *The Blessing of a Skinned Knee* is about ~ allowing our children to 'skin their knees' and find out that it is okay; they may be sad or upset, but they can and will overcome it. The questions that all parents (and teachers) wanted to know are: How can we help our children to be more resilient? What makes one child more resilient than another? Dr. Brooks points out that children are hopeful. They have the capacity meet a challenge or adversity head-on and problem-solve their way through it.

They have the ability to feel worthy and appreciated. They can be confident and feel competent to work their way through tough spots. They just need our support, love, and guidance.

Next on Dr. Brooks' agenda in his book is the mindset of the parents (and I feel this is true for educators as well) who help children to develop this disposition for resiliency. He lists ten "guideposts" for such adults in our children's lives. They are: Being empathic; Communicating effectively and listening actively; Changing negative scripts; Loving our children in ways that help them to feel special and appreciated; Accepting our children for who they are and helping them to set realistic expectations and goals; Helping our children experience success by identifying and reinforcing their "islands of competence"; Helping children recognize that mistakes are experiences from which to learn; Developing responsibility, compassion, and a social conscience by providing children with opportunities to contribute; Teaching our children to solve problems and make decisions; Disciplining in a way that promotes self-discipline and self-worth

In *The Blessing of a Skinned Knee*, Mogel talks about how, according to Jewish thought, each child has his or her own unique path towards serving God. One of our jobs as parents and teachers is to help them find out what this path happens to be. While this can certainly be a challenge at times, it is also a blessing to embrace this opportunity with our children. I know that we, in the Children's Center, certainly appreciate the time that we have to be with your children. We will continue to strive to achieve the ten guideposts mentioned above and partner closely with you to bring special meaning and blessing to the lives of all of our children.

*L'Shalom,  
Marcie*

Contact Lori at [lorithomas@mail.com](mailto:lorithomas@mail.com) to learn more about this rewarding position.

**RELAY FOR LIFE** takes place this year on May 15 – 16. This overnight event celebrates cancer survivorship and raises money for research and programs of the American Cancer Society. We are looking for a team captain or two to organize our efforts. Contact Howard Ostroff at [hostroff@rcn.com](mailto:hostroff@rcn.com) or Betty Weiner at [betts235@yahoo.com](mailto:betts235@yahoo.com).

Our next committee meeting is on Monday, February 8 at 7:30 pm. If any of the above programs have sparked your interest, come join us at the Temple. We're a very friendly group. Really!

*Howard Ostroff & Betty Weiner  
Co-Chairs*

## Social Action

Our committee has been busy planning our Tikkun Olam Day/Mishpacha Mitzvah Moments (Family Mitzvah Moments) on Sunday, March 14. This is a day for members of our temple community to perform mitzvot (sacred tasks) and to help 'repair the world.' We have lined up an exciting assortment of activities – something for everyone. Choose from

**The Greater Boston Food Bank** – Help sort food that the Food Bank distributes around Boston. For those age 16 and above.

**Temple Beth Shalom's Youth Choir** will perform at North Hill and Avery Manor

**Clean-up Along the Charles River** – Do some early spring clean-up along the banks of the Charles River.

**Coalition for Literacy Art Project** – Decorate bookmarks and labels for students at the Mozart School where tutors from TBS volunteer.

**Coalition for Literacy Bookshelves** – Construct bookshelves for the students at the Mozart School so they can proudly display the books they are reading.

**Library Clean Out Day** – Make the Temple's Library shipshape by labeling shelves, weeding out old and damaged books, putting the books in order, and making a large map of the

library's layout.

**CPR and AED Training** – Organized by the Temple's Safety & Security Committee, this is your opportunity to be trained in CPR and the use of a defibrillator. This is a three-hour course that costs \$45.

**Needham Housing Authority** – Take up a paint brush and spruce up the Community Room on Chambers Street. In addition to painting, help with rearranging furniture for some residents.

Most activities will begin after a brief assembly starting at 12:15 pm at the Temple. Adults and families with children will leave the temple at 12:30 pm and proceed to their assigned project. We've arranged for the projects; you just need to take care of transportation for you and your family. Pre-registration is required. Please use the registration form included in the *Scroll* to save your spot. If you have any questions, contact John Dennis at [jdennis@rcn.com](mailto:jdennis@rcn.com), or Betty Weiner at [betts235@yahoo.com](mailto:betts235@yahoo.com).

**TUNA for the Family Table** – For many years, Temple Beth Shalom has engaged in an ongoing collection of canned tuna for Jewish Family and Children's Services, "Family Table" program. Lori Thomas is currently heading up this program at TBS and is looking for a successor.



It is with great excitement that we formally announce that  
"Taste of the Town" to be held on  
Saturday, May 15, 2010, at Temple Beth Shalom.  
Please join us for this special evening complete with dinner, open bar,  
and a silent and live auction.

All proceeds from the event go to support our temple's  
educational programs for children and youth.

**Log on to [www.tbsneedham.org](http://www.tbsneedham.org) for more information  
and to access auction and advertisement book forms.  
Pre-reserve and pay for your tickets today!**

If you have any questions or would like more information please contact  
Melissa Grossman at 781-559-3242 or [Melissa\\_grossman@yahoo.com](mailto:Melissa_grossman@yahoo.com) or  
Lori Shaer at 781-400-5214 or [Lshaer@comcast.net](mailto:Lshaer@comcast.net).

---

### Taste of the Town

Pre-reserve and pay by March 1, 2010 and save \$10 per ticket.  
As of March 2, 2010, the price will increase to \$100 per ticket.

Name: \_\_\_\_\_ Phone: \_\_\_\_\_

Address: \_\_\_\_\_

# of tix@ (\$90 before March 1, 2010, \$100 after March 1, 2010) = Total \$ \_\_\_\_\_

Please seat me with: \_\_\_\_\_

Checks should be made payable to: Temple Beth Shalom  
 VISA  MC CC#: \_\_\_\_\_ Exp. Date: \_\_\_\_\_

Temple Beth Shalom - Attn: Taste of the Town  
670 Highland Avenue, Needham, MA 02494

A Celebration of Healing & Living  
for the benefit of Joe Burstein  
Organized and sponsored by  
The Friends of Joe Burstein Committee  
Saturday, March 27 7:00 - 10:00 p.m.  
Temple Beth Shalom - Needham

Join us for an evening of musical entertainment,  
good food, silent auction & raffle.

Tickets - \$25.00 per person (Tickets will be held at the  
door.)  
Cash Bar

To order your tickets, please send your check  
(payable to The Joseph Burstein Benefit Trust) and  
mail to  
Stephanie Ross 14 Winter Street Lincoln 01773

It's been a while since our  
new Memorial Boards  
have been placed in the Sanctuary.  
As we prepare to order new plaques  
for loved ones, we would like to remind you  
that there is space available to add  
additional names. Inclusion in the  
Memorial Boards is a wonderful way  
to memorialize those  
who have passed away.  
If you would like to have the name(s)  
of your loved one(s) included,  
please contact Tiziana Getz  
at the Temple Office.  
Each plaque cost \$360.00.

Joan Bycoff, Memorial Board Representative

## Who's Who at Temple Beth Shalom

<b>Rabbi</b>	Jay C. Perlman	jperlman@tbsneedham.org
<b>Rabbi Emeritus</b>	Todd Markley	tmarkley@tbsneedham.org
<b>President</b>	Rifat Sonsino, Ph.D.	rsonsino@tbsneedham.org
<b>First Vice President</b>	Beth Pinals	bpinals@comcast.net
<b>Vice President</b>	Michael Bailit	mbailit@bailit-health.com
<b>Vice President</b>	Paul Alpert	psa@wpwr.com
<b>Treasurer</b>	Bernice Behar	bbehar@rcn.com
<b>Asst. Treasurer</b>	Richard Hirsch	rhirsch@gggcpas.com
<b>Financial Secretary</b>	Jeff Shapiro	js Shapiro@rcn.com
<b>Asst. Financial Secretary</b>	Lisa Channen	earlcamp@rcn.com
<b>Recording Secretary</b>	Liv Nash	ml.nash@verizon.net
<b>Legal Counsel</b>	Sarah Fleckner	fleckner@comcast.net
<b>Liaison to the Greater Boston Jewish Community</b>	Jonathan D. Tamkin	jtamkin@tamkinhochberg.com
	Judy Chudnofsky	judychud@comcast.net
<b>Trustees - 2012</b>	<b>Trustees - 2011</b>	<b>Trustees - 2010</b>
Meredith Fried	June Atkind	Sheryl Hirsch
Debbie Kublin	Patti Grossman	Liv Nash
Peter Mesnik	Jeffrey Samet	Doug Pleskow
Loren Shapiro	Ken Spigle	Karen Zeiger
<b>Chairperson, Budget &amp; Finance</b>	Jeff Shapiro	js Shapiro@rcn.com
<b>Building/House Maintenance</b>	Roger Amuter	rhaeng@rcn.com
	Loren Shapiro	Lshapiro@assetmortgage.net
<b>Children's Center</b>	Melissa Gladstone	happy.rock@comcast.net
	Margaret McConchie	memconchie@gmail.com
<b>Communications</b>	Rob Saltzman	rob777@comcast.net
	James Winterman	jwinterman@comcast.net
	Linda Rosenberg	Linr@aol.com
	Kenneth Davis	pkedavis@aol.com
<b>Endowments, Gifts Memorials</b>		
<b>Investments</b>	Andy Streisfeld	andystreisfeld@comcast.net
<b>Jewish Life Education</b>	Patti Grossman	grossclan@comcast.net
<b>Library</b>	Lisa Rothenberg	lbrgrs@mail.com
<b>Long Range/Strategic Planning</b>		
<b>Membership Services</b>	Ann Shuman	ann.shuman@yahoo.com
	Liv Nash	ml.nash@verizon.net
<b>Special Arrangements</b>	Jan Cohen	mjmcohen@verizon.net
	Suzy Tobin	suzyltobin@hotmail.com
<b>Personnel</b>	Gerry Koss	g.koss@verizon.net
<b>Religious School</b>	Sheldon Bramson	sbramson@comcast.net
	Mindy Pasco-Anderson	denilydoo@rcn.com
<b>Safety and Security</b>	Jason Dunn	jason@dunn-adair.com
	Jeremy Serwer	jeremy@theserwercompany.com
<b>Social Action/Israel/ARZA</b>	Howard Ostroff	hostroff@rcn.com
	Betty Weiner	betts235@yahoo.com
<b>Worship/Music</b>	Chuck Levin	crlevin@levinlawoffice.com
	Sara Smith	sara_jane@comcast.net
	Lois Raskind	lorask@aol.com
<b>Youth Commission</b>	Noni Sutherland	nsutherland@novations.com
<b>Chairpersons:</b>		
<b>(Non-Voting – including Committee and Initiatives Chairs)</b>		
<b>Board Training Program</b>	Michael Bailit	mbailit@bailit-health.com
<b>Chesed Committee</b>	Margie Glou	mglou@comcast.net
	Kim Silverman	kimsilver@comcast.net
<b>Children's Center Director Search</b>	Meredith Fried	meredith_fried@yahoo.com
<b>Governance Project</b>	Michael Bailit	mbailit@bailit-health.com
<b>Human Resources Advisor</b>	Richard Atkind	richatkind@verizon.net
<b>Leadership Development Project</b>	Steve Snyder	stevesnyder1@comcast.net
<b>Sacred Aging Initiative</b>	Ilene Sharp	pencil9@aol.com
<b>Shomrei Adamah</b>	Nancy Berger	smallfries3@comcast.net
	Beth Shulman	bethjs@verizon.net
<b>TBS Cares</b>	Richard Atkind	richatkind@verizon.net
	Ken Spigle	kenspigle@aol.com
	Morris Porter	mmmpor@hot.com
<b>Temple Tots</b>	Mara Gorden	mara@thegordens.com
	Sara Rosin	sara_rosin@yahoo.com
<b>Young Families Outreach</b>	Amy Willis	willisamy@comcast.net
<b>Youth Resilience Project</b>	Anne Weinstein	annewein@comcast.net



## Yahrzeits



### FEBRUARY 5

Zelda Yogel Andler  
 Robert Boyer  
 Esther Barkin  
 Sarah Carmen  
 Ann Chernov  
 Godfrey Cohen  
 Isadore Crane  
 Irving Heller  
 Ben Herring  
 Bertha Herring  
 Adele Hillman  
 Sadie Katz  
 Adrienne Kenzora  
 Anna Leppo  
 Nathan Levin  
 William Lowenstein  
 Nathan Roberts  
 Jenifer Saltzman  
 James Sandberg  
 Frances Schultz  
 Norman Simon  
 Hyman Sobell  
 Arthur Sparr  
 Bert Sparr  
 Emma Novick Stone  
 Pearl Stone  
 Otto Sulzberger  
 Laurence S. Wolk  
 Leon Wolk

### FEBRUARY 12

Stephanie Allman  
 Sara Bello  
 Billie Burstein  
 Miriam Chaffin  
 Frances R. Channen  
 Charles Fienberg  
 Freda Gerstenfeld  
 David Giller  
 Lillian Golden  
 Minnie Golden  
 Audrey Goldstein  
 Etta Goodman  
 Samuel Hirschfield  
 Minnie Kagan  
 Andrew Kahalas  
 Philip Kowal

### Edward Herbert Kushner

Frederick Kupferman  
 Edward Lebowich  
 Florence Ledner  
 Lisa Lehman  
 Morris Lepes  
 Edythe Levy  
 William David Loeser  
 Lenore Luskin  
 Philip Lustig  
 Edward Marshak  
 Oscar Melman  
 I. Michael Rosen  
 Sylvan Herbert Rosenthal  
 Elaine Bernstein Saltzman

### FEBRUARY 19

Lillian Aarons  
 Abraham Barsook  
 Frances Borson  
 Frances Kay Boyar  
 Aaron Buchman  
 Florence Cipriano  
 Bessie Davis  
 Nancy Eiseman  
 Robert Epstein  
 Diane Feinzig  
 Eva Finkelstein  
 Harry Goodman  
 Frank Herbert  
 Lena Hyman  
 Irving Kaplan  
 Rose Katkis  
 Vivian Krafchik  
 I. Jay Krieger  
 Gilbert LeBlanc  
 Sydney Loewenthal  
 Louis Messing

### Herma Pelsner

John Potter  
 Sandra Lee Rosenblatt Rubin  
 Philip Sadow  
 Louis Sagansky  
 Norman L. Seltzer  
 Jacob Shulman  
 Rose Slawsky  
 Selma Sokel  
 Michael Stocklan  
 Bertha Taub  
 Gertrude Waldman  
 William A. Weener  
 Melvin Zabar

### FEBRUARY 26

Selma Baroness  
 Jerome Casper  
 Louis L. Cohen  
 Lenore Drabkin  
 Edward Ediff  
 Marjorie Feuer  
 Joseph Goldfarb  
 Bert Goldstein  
 Lottie M. Grossman  
 Sidney Hentoff  
 Bernard Holzman  
 Seymour Kahn  
 Lucille Kline Kalish  
 Irene Kaplan  
 Bernice G. Karger  
 Louis Krafchik  
 Gertrude Landy  
 Irving Lerman  
 Fay May  
 Edward Miller  
 Molly Newfield  
 Theodore Pearlman  
 Robert Pearlstein  
 Eva Perlmutter  
 Fannie Raemer  
 David Riskin  
 Theodore Robbins  
 Anna Ruth Shafer  
 Gene M. Sobel  
 Max Sparr  
 Irving Stern  
 Gussie Troderman

## Library

The Temple Library has been the beneficiary of many gifts in the past few years. I'd like to take this opportunity to thank once again Bob and Marilyn Brooks who have donated a book for every B'nai Mitzvah child at the temple. This year the Brooks' have been joined by the Lerner Family (Jeffery, Jill, Matthew and Samantha) who have generously donated to the library's audio visual collection. This gift will enable Sandy Whitecross to purchase a DVD in honor of a Bar/Bat Mitzvah child, roughly sixty titles per year! Thank you to the Lerner Family. A housekeeping note: I bet not too many of you realize that a library, like a garden, needs to be weeded! In March, the library will be hosting a Sunday morning weeding/bagel event. Watch for details in the March Scroll and e-newsletter for more information.

If you are interested in volunteering, please contact Lisa Rothenberg at [lbrgrs@mail.com](mailto:lbrgrs@mail.com) or 781-455-9849.

## Sisterhood Rosh Chodesh Group

**Sunday, February 7 from 3:00 - 4:30pm**

Home of Trina Novak, 33 Gilbert Road Needham

RSVP to Trina: 781-449-6747, [kermittf@rcn.com](mailto:kermittf@rcn.com)

**Rosh Chodesh:** Female-centered **Rosh Chodesh** observances vary from group to group, but many are centered around small gatherings of women, called **Rosh Chodesh** groups. These groups engage in a wide variety of activities that center around issues important to Jewish women, depending on the preference of the group's members. Many **Rosh Chodesh** groups explore spirituality, religious education, ritual, health issues, music, chanting, art, and/or cooking.

**Rosh Chodesh** is a monthly holiday based on the new month. We will celebrate the beginnings of the month in our own unique way as the new group comes together to form its own traditions. Enjoy a spiritual and social gathering to create connections and relationships among your Sisterhood friends. Be a part of shaping this group into an exciting new addition to your spiritual life in Sisterhood.

Please RSVP to Trina Novak at [kermittf@rcn.com](mailto:kermittf@rcn.com) or 781-449-6747 so we know how many people to expect.

Join us for a great way to welcome in the new month!

*\*\*There is no charge for this event. If you would like to join Sisterhood to be a part of this wonderful group, please contact Sharon Manchel at [smanchel@comcast.net](mailto:smanchel@comcast.net) or 781-455-6347.*



## HandyTBS, You Can Fix It!

*Have you ever wanted to fix something around the house if you only knew how?*

*TBS is offering classes for anyone who'd like to learn how to do home repairs.*

The classes will be taught by Jim Boesel, a Master Home Hobbyist (A title he made up).

You may have seen Jim teaching the how to clinics at Home Depot or the set he built for "The Music Man" or maybe one of his classes for the TBS's CARES group.

The first class will be on simple affective ways to reduce your heating bills this winter without having to turn down your thermostat.

Humidifiers, radiators, programmable thermostats, pipe insulation and or frozen pipe issues.

Things you need to know to maximize your heating efficiency.

Future subjects will be determined at this meeting.

The objective is to empower you to tackle those home repairs yourself or, know when you need a professional.

Fix that leaky faucet, broken lamp or window, squeaky door or that toilet that won't stop running.

The subjects are up to you.

**If interested in learning more email**

**Jim at [handytbs@gmail.com](mailto:handytbs@gmail.com) for more information.**



Please join us for an information-filled evening

## COLLEGE NIGHT

Sponsored by The Sisterhood of Temple Beth Shalom  
Tuesday, February 9 at 7:30pm • Free Admission  
Light Refreshments Served

*Worried about your child getting into college?*

*What do you need to do to prepare?*

*How soon do you need to worry about college?*

These questions and more will be answered by Linda Shapiro, college advisor, who will present to parents everything you need to know to calm yourself and know what to do to get your child into college.

Linda's vast experience, including being head guidance counselor at Newton North High School, as well as her calm style, will help you to plan appropriately for your high school student to get into a college of his or her choice.

Questions? Please contact Ann Shuman - [ann.shuman@yahoo.com](mailto:ann.shuman@yahoo.com)



Sisterhood presents:

## Ask the Rabbis

Thursday February 25, 7:30 pm  
in the Community Room.

Back by popular demand, Sisterhood is pleased to present an "Ask the Rabbis" evening.

We'll have the opportunity to chat informally with our rabbis and ask them anything and everything!

Join us for coffee and dessert at the start of the evening at 7:30 pm.

Last year's event was so enjoyable and thought-provoking, we asked the rabbis—and they agreed—to come back for more questions and conversation.

Please RSVP to Magda Schmalz  
[mkschmalz@yahoo.com](mailto:mkschmalz@yahoo.com) or 781-559-8189



## Do you like to cook?

*The Chesed Committee*

*is looking for people to cook and deliver meals to congregants who are dealing with an illness, injury or issues of continuing care.*

*If you are able to provide support to our temple family by preparing a meal, please contact Kim Silverman at [kimsilver@comcast.net](mailto:kimsilver@comcast.net) or Margie Glou at [mglou@comcast.net](mailto:mglou@comcast.net).*

*Become a Bikur Cholim Volunteer - Comforting the Sick and join us in performing this mitzvah!*

*Your support is appreciated and welcomed.*

## Contributions

The minimum donation for recognition in *The Scroll* is \$10.00.  
"At birthdays, anniversaries, yahrzeits, etc., support your Temple Fund."

### Rabbi Perlman's Discretionary Fund

**Donor**  
The Ambuter Family  
The Turner Family  
Lois & Abbie Berkowitz &  
Marcia Berkowitz & Marc Cohen  
Ethel & Sam Tobin  
Beth & Scott Gilefsky

**Donor**  
Ralph & Ina Melen  
The Popper Family  
Michael & Marcia Goff  
Joyce & David Wilson

**Donor**  
Elissa Salett  
Jeffrey Samet, Michele Marram  
Abel, Ethan & Oren  
Rita Perlman Black & Family  
Will Kussell  
Lucille Chersonson  
Ann & Robert Lurie  
Ann & Robert Lurie  
Janet & Mort Parker  
Janet & Mort Parker  
Susan Brisk  
Charles Ford  
Carol & Arnold Farber  
David & Shirley Berg  
The Cohen Family  
Norman & Arlene Slawsby  
Helen Tobin  
Bonnie Goldberg  
Ralph Levine

### Rabbi Markley's Discretionary Fund

**Donor**  
The Turner Family  
The Ambuter Family  
Aaron Katersky & Marcy Katz  
The Channen Family

**Donor**  
The Stambach Family  
Michael & Marcia Goff  
Joyce & David Wilson

**Donor**  
Lucille & Edward Chersonson  
Bruce Lustig

### The Chesed Fund

**Donor**  
Linda Lourie  
Ellie Jacobs  
Ellie Jacobs

Florence Schumacher  
Carl Gordon

**Donor**  
Jerry Schumacher  
The Pinals-Barringer Family  
The Berger Family  
Roberta Gerson

### Children's Center Fund

**Donor**  
The Blum Family  
Rabbi Todd Markley

**Donor**  
Jan & Doug Fleckner

**Donor**  
Sally & Stephen Patkin & Family  
Mia Markley

**In appreciation of**  
Rabbi Perlman at Adam's Bar Mitzvah  
Rabbi Jay Perlman  
Rabbi Perlman

Rabbi Perlman's kindness  
Rabbi Perlman for making  
Olivia's naming so special

**In honor of**  
Gerald Ginsberg's special birthday  
Isabelle Turner's Bat Mitzvah  
Alex Goff becoming a Bar Mitzvah  
Our beautiful High Holy Days

**In memory of**  
Evelyn Price  
Leon Samet

Faye N. Bennett  
S. Donald Kussell  
Hope Langburd  
Rose Green  
William Lurie  
Martha Ehrenfeld  
Charles Perlmutter  
Gertrude Barsook  
Benjamin Ford  
Rose Farber  
David Darish  
Joanne Cohen Weissman  
Rose Farber  
Ed Tobin  
Selma Davidson  
Herman S. Levine

**In appreciation of**  
Rabbi Todd Markley  
Rabbi Markley at Adam's Bar Mitzvah  
Rabbi Markley for officiating at our wedding  
Rabbi Markley for participating in Vivian  
Channen's funeral service

**In honor of**  
Cara's Bat Mitzvah  
Alex becoming a Bar Mitzvah  
Rabbi Markley becoming Associate Rabbi

**In memory of**  
David Perlmutter  
Lorraine Granek

**In honor of**  
The Bat Mitzvah of Melanie Joseph  
The Bat Mitzvah of Melanie Joseph  
Carol & Ed Ginn on the birth of twin  
grandchildren, Tahlia & Reya  
The Bat Mitzvah of Melanie Joseph  
The many kindnesses of Margie & Alan Glou

**In memory of**  
Frances Schumacher  
Jeanne Levine  
Joel Simes  
Joel Simes

**In appreciation of**  
Marcie Berul & Smadar Stearns  
Dr. Robert Brooks' gracious sharing of his  
time & wisdom with our "Blessing of a  
Skinned Knee" book group

**In honor of**  
Jamie & Sarah Fleckner

**In memory of**  
Ruth & Maxwell Field  
Isaiah Hart's great grandmother

## Education Fund

### Donor

Adam Remondi

Jessica Sickles  
Zachary Sickles  
The Pasco-Anderson Family  
Alexander Krushell  
Jonathan Krushell  
The McConchies

The Balder Family  
Rabbi Jay Perlman  
The Thomas Family

Hannah Fleckner  
Josh Fleckner  
Kim & Howard Silverman

The Shusterman Family  
Jim & Sheryl Hirsch  
Amara, Ben & Lizzy Mesnik

The Mesnik Family

The Finn Family

Lauren Savrin & Michael Savrin

Maddy & Anna Garf

Nina & Grace Kosowsky

Tracy & Richard Winkler  
The Seltzer/Seraydar Family  
Emma Dubois & Family

Beth Wolfson, Joe & Sam Levens  
The Porter Family  
Julie, Marty, Ian & Leah Goldberg

Tzipi Crandell  
The Grosberg Family  
The Blum Family

Mark & Randi Kirstein  
Bradley, Eric & Emily Stoller  
Leo & Gabriel Stern  
The Shifman Family

Brandon Bowers  
Aimee & Scott Silverman

Annie Rotman  
Danny & Eli Blumenstein

**Donor**  
Matt & Sammy Lerner

Nina & Marc Idelson

Michelle Saylor & Family

**Donor**  
Jill & David Silverstein

**Donor**  
Ruth & Shelly Bramson  
Gary, Shelly, Elissa & Josh Goldman  
Rabbi Rifat Sonsino  
Ruth & Shelly Bramson  
Beth Pinals

### In appreciation of

Carol Bolton Kappel, Rabbi Jay Perlman,  
Rabbi Todd Markley  
Rabbi Michele Lenke, Sheira Rosenfield  
Carol Bolton Kappel  
Everyone  
Jessica Solomon, Our Madrichim  
Raquel Levy, Jessica Solomon  
Lesley Litman, Ruth Neiterman,  
Hal Schevitz, Sabrina Shemesh  
Ethan Solomon, Jessica Solomon  
Everyone  
Ilana Benivgy, Jeri Robins, Sandy Whitecross,  
Our Madrichim  
Amy Hollander  
Carol Bolton Kappel  
Nate Karol, Allie Klein, Rabbi Michele Lenke,  
Adam May, Sandy Hain  
Carol Bolton Kappel  
All our teachers & support staff  
Max Chaiken, Allie Klein, Rabbi Michele Lenke,  
Rabbi Todd Markley, Hannah Orlansky,  
Emily Perlman, Rabbi Jay Perlman,  
Sabrina Shemesh, Ethan Solomon,  
Jessica Solomon, Sandy Whitecross  
Emily Perlman, Sabrina Shemesh,  
Ethan Solomon, Jessica Solomon,  
Our Madrichim  
Nate Karol, Rachel Levy, Jessica Solomon,  
Sandy Whitecross  
Max Chaiken, Allie Klein, Sheira Rosenfield,  
Hannah Orlansky, Jeri Robins  
Ilana Benivgy, Nate Karol,  
Emily Perlman, Sheira Rosenfield,  
Sabrina Shemesh, Ethan Solomon,  
Jessica Solomon, Sandy Whitecross  
Carol Bolton Kappel, Max Chaiken,  
Emily Perlman, Sheira Rosenfield,  
Hal Schevitz  
Amy Hollander  
Ruth Neiterman, Sabrina Shemesh  
Richie DeRosa, Hannah Orlansky,  
Sheira Rosenfield, Hal Schevitz  
The TBSRS Faculty & Staff  
Jeri Robins, Sandy Whitecross  
Nate Karol, Allie Klein, Hannah Orlansky,  
Jeri Robins, Ellyn Shriber, Sandy Whitecross  
Allie Klein, Hannah Orlansky, Sheira Rosenfield  
Max Chaiken, Allie Klein, Sheira Rosenfield  
Max Chaiken, Sheira Rosenfield, Nate Karol,  
Rabbi Todd Markley, Hannah Orlansky  
Hannah Orlansky, Jeri Robins, Ellyn Shriber  
Hannah Orlansky, Jeri Robins, Jessica Solomon  
The entire Religious School Staff  
Max Chaiken, Amy Hollander  
Sabrina Shemesh, Ethan Solomon,  
Jessica Solomon  
Raquel Levy, Sheira Rosenfield  
Hannah Lindholm, Sheira Rosenfield,  
Hal Schevitz  
Hannah Lindholm, Ruth Neiterman  
Amy Hollander, Sabrina Shemesh,  
Ethan Solomon, Jessica Solomon

**In appreciation of**  
Max Chaiken, Nate Karol, Allie Klein,  
Raquel Levy, Rabbi Todd Markley,  
Hannah Orlansky, Rabbi Jay Perlman  
Nate Karol, Sabrina Shemesh, Ethan Solomon,  
Jessica Solomon, Sandy Whitecross  
Scott Goldman, Nate Karol, Allie Klein,  
Rabbi Michele Lenke, Rabbi Todd Markley,  
Rabbi Jay Perlman, Sandy Whitecross

**In honor of**  
Gert & Jerry Silverstein

**In memory of**  
Madeleine Bramson  
William Goldman  
Victoria Sonsino  
Louis Bramson  
Sonny Pinals

Bobbi & Steve Niss  
Mildred Cohen & Family  
Bobbie & Ed Friedman  
Jennifer & Michael Green  
Esther Epstein & Family

Abraham Shwom  
Melvin Cohen  
Leon Weiss  
Peggy Anderson  
David Epstein

#### Endowment Fund

**Donor**  
Rich & Bev Luskin

**In memory of**  
Molly Adler

#### Feldman Community Outreach Fund

**Donor**  
The Davidson/Stern Family

**In memory of**  
Leonora Davidson, Sol Davidson & Irving Stern

#### General Fund

**Donor**  
Judy & Fred Shapiro  
Steve Helfer  
Mildred Cohen  
Florence Weener  
Ken & Mimi Bauer  
Meredith & Gabe Fried  
Jane & Richard Brody  
Renee Hart

**In memory of**  
Gertrude Ullian  
Mitchell Helfer  
Morris Charloff  
Ida Gershman  
Gertrude Bauer  
Patricia Ruth Cohen  
Harold Brody  
Samuel Krushell

#### Richard Todd Sacks Jewish Life Education Fund

**Donor**  
Marlene & Jerry Schultz  
**Donor**  
Lauren Corkin  
Cindy & Ron Matloff  
Helaine & Joseph Yanofsky

**In honor of**  
Ina Glasberg's special birthday  
**In memory of**  
Bob Miller  
Jean Nider  
Minnie Yanofsky

#### Library Fund

**Donor**  
Marilyn & Bob Brooks  
Leonard & Carolyn Finn  
Lisa Rothenberg  
Sally & Stephen Patkin & Family

**In memory of**  
Larry S. Karlin  
William Cohn  
Frances Acker  
Ruth & Maxwell Field

#### Music Fund

**Donor**  
Jerry Sherman  
**Donor**  
Jerry Sherman

**In appreciation of**  
Marcie Jonas  
**In honor of**  
Sarah Riskin's recent participation in the  
Spectrum Singers Concert

**Donor**  
Frederic Katz  
Roberta Gerson  
Joan & Sheldon Bycoff

**In memory of**  
Enid A. Jackson  
Bernice Pearlman  
Rose Bycoff

#### Permanent Memorial Funds Gersten/Hoisington Memorial Lecture Fund

**Donor**  
Steven & Barbara Popper

**In memory of**  
Ann Popper & Dorothy Diamondstein

#### Amy Sanker Kappel Memorial Fund

**Donor**  
Carolyn Shapiro

**In memory of**  
Besse Fisher

#### Ned Saltzberg Memorial Fund

**Donor**  
Toby & Edward Fox  
**Donor**  
Toby, Edward, Joshua, Michael  
& Michele Fox

**In honor of**  
The Bar Mitzvah of Adam Ambuter  
**In memory of**  
Rose Bycoff

#### Prayerbook Fund

(The minimum donation for a bookplate is \$54.00)

**Donor**  
Ina & Ron Glasberg  
**Donor**  
Sally & Stephen Patkin & Family

**In honor of**  
Richard Bookman's special birthday  
**In memory of**  
Ruth & Maxwell Field

#### Sanctuary Flower Fund

**Donor**  
The Ambuter & Colleton Families  
The Channen Family  
The Waldman Family  
The Goff Family  
The O'Brien Family  
**Donor**  
The Yogel Family  
The Bor Family

**In honor of**  
Adam Ambuter becoming a Bar Mitzvah  
Rebecca Channen becoming a Bat Mitzvah  
Emily Waldman becoming a Bat Mitzvah  
Alex Goff becoming a Bar Mitzvah  
Jonathan O'Brien becoming a Bar Mitzvah  
**In memory of**  
Rose Farber  
Hazel Stieber

#### Sisterhood Oneg Fund

**Donor**  
Jerry Sherman  
The Ambuter & Colleton Families  
The Channen Family  
The Waldman Family  
The Goff Family  
The O'Brien Family

**In honor of**  
Betty Weiner  
Adam Ambuter becoming a Bar Mitzvah  
Rebecca Channen becoming a Bat Mitzvah  
Emily Waldman becoming a Bat Mitzvah  
Alex Goff becoming a Bar Mitzvah  
Jonathan O'Brien becoming a Bar Mitzvah

#### Social Action Fund

**Donor**  
Joseph Miller & Linda Germaine-Miller  
**Donor**  
Marsha Salett & Elissa Salett  
Susan Sloane Sherman  
Cheryl Weisman-Cohen

**In honor of**  
Stephanie Fried's marriage  
**In memory of**  
Evelyn Price  
Gloria Sloane  
William Weisman

#### Torah and Sanctuary Fund

**Donor**  
The Turner Family  
**Donor**  
Joyce Cotton

**In appreciation of**  
Rabbi Michele Lenke  
**In memory of**  
Joseph Cotton

#### Youth Fund

**Donor**  
The Blum Family  
**Donor**  
Carl Gordon  
Jean & Joe Sands  
Beverlee & Richard Bookman  
Lois & Abbie Berkowitz  
Marty, Jan & Maggie Cohen

**In appreciation of**  
Allie Klein  
**In honor of**  
Adam Ambuter becoming a Bar Mitzvah  
Rebecca Channen becoming a Bat Mitzvah  
Adam Ambuter becoming a Bar Mitzvah  
Adam Ambuter becoming a Bar Mitzvah  
Allie Klein for her awesome work with  
Temple teens

**Donor**  
Joyce Cotton  
Roberta Gerson  
Shelley, Gary, Elissa & Josh Goldman

**In memory of**  
Joseph Cotton  
Richard Bernard Pearlman  
Leonard Fine

### *Sharing Our Lives*

*We extend our sympathy to* המקום ינחם

James and Mindy Pasco-Anderson, Ben, Emily and Julia  
on the passing of their mother and grandmother, Peggy Anderson

Shelley Redstone, Jesse, Alex and Emily  
on the passing of their brother and uncle, Joel Simes

Paula and David Schatz  
on the passing of their aunt, Gertrude Shaffer

Inna and Mark Tseytlin, Mikhail, Zakhary and Benjamin  
on the passing of their father and grandfather, Vladimir Rozenberg

Coral and Roger Ambuter, Ed and Mary Ann Ambuter, Hal and Cherwyn  
Ambuter, Bill and Yvonne Ambuter on the passing of their brother,  
brother-in-law and uncle, Jack Epstein

Louis and Patti Grossman on the passing of their uncle, Albert I. Green

Heather Rue, Hannah and Zac on the passing of their brother and uncle,  
Matthew Cline

Marcia and Ken Brier, Michael and Jennifer on the passing of their mother,  
mother-in-law and grandmother, Paula S. Cohen

*We extend Mazal Tov to* מזל טוב!

Allyson and Steven Van Dam  
on the birth of their daughter, Abigail Mia.  
Proud big brothers are David and Josh.

# Sharon Memorial Park

Pre-need Planning ❖ Interfaith Sections



*Use of cemetery property before need is a wise  
and an act of loving kindness for you and your  
family.*

Contact: Ira Vogel  
781.828.7216 www.sharonmemorial.com



**PINNACLE**  
Residential Properties

**Elyse Marsh, Realtor**  
*For the Pinnacle of Service*

555 Washington Street ❖ Wellesley, Massachusetts 02482  
781.237.5000 office ❖ 617.803.3571 cell  
www.ElyseMarsh.com



## Prudential

Prime Properties  
Advantage

1089 Great Plain Avenue, Needham  
Award Winning Office - 2004 - 2007



Jill Finkelstein



Leslee K. Winston



Jane Migdol



Jennifer Lichtman



Noah Pearlstein

Discover the Advantage!  
**781-444-1234**  
Please stop by and visit our new website!  
**www.PruPrimeAdv.com**

## Chestnut Dental Associates

*care for the entire family*

Dentistry and Orthodontics  
for Children and Adults

Stephen Shusterman DMD    Richard Strakus DMD  
Howard Needleman DMD    Martin Spielmann DMD  
Jack Hertzberg DMD    Debra Blattman DMD  
Kenneth Yelland DMD    Anne Hertzberg DMD  
Richard Bruun DDS    Nora Zaki DMD  
Shelley McBride DMD    Amy Regen DMD  
Cristen K. Beard DMD  
Jonathan Chason DMD  
Jon Shusterman DMD

87 CHESTNUT STREET, NEEDHAM 781-444-6650  
WWW.CHESTNUTDENTAL.COM

*Remember your loved ones with a permanent plaque on  
the Sanctuary Memorial Boards as a Blessed Memory.*

*For information, please contact:  
Tiziana Getz in the Temple office 781-444-0077.*

Publication of an advertisement in the Scroll  
is neither an endorsement nor a recommendation of any  
advertisers' products or services.

Consumers should perform their own due diligence  
before acquiring goods or services from any advertiser.



## Gary M. Kaufman

No Fancy Words  
Just Real Estate Results  
781-444-7555  
garykaufmanrealtor@gmail.com  
www.garykaufmanrealtor.net

- \$50 Million in Sales Representing Buyers and Sellers 2005-2009
- Over 60 Local Real Estate Transactions in the last 60 months
- #1 Needham Agent 2009 Per Multiple Listing Service (YTD 8/09)



**RE/MAX Home Team**  
339 Chestnut Street, Needham, MA 02492

## Truly Yogurt and Ice Cream

We offer delicious ice cream, frozen yogurt, and soft serve.

There is always something to satisfy everyone at

### Truly Yogurt

with generous portions at reasonable prices.

**35 Grove Street • Wellesley, MA**

**781-239-1356**

[www.trulyyogurt.com](http://www.trulyyogurt.com)

"2008 Best of Wellesley" - Wellesley Townsman

BERNIE **Segaloff's Jewelers** CHERYL

20 Chestnut Street

Needham, MA 02492

**781-449-4810**

WE CAN TURN **GOLD** INTO \$\$\$ **GREEN** \$\$\$

## WE BUY GOLD

& Platinum

BROKEN JEWELRY COLLECTING DUST

BRING IT IN TO SOMEONE YOU TRUST

**JEWELRY REPAIRS DONE ON PREMISES**

**WATCH BATTERIES REPLACED WHILE YOU WAIT**



## Nurture, Support and Celebrate!

*I am interested in participating in Temple Beth Shalom's Chesed Committee at least once this year.*

Please check which mitzvahs interest you.\*

- Visiting an ill or housebound congregant
- Delivering a meal to an ill or housebound congregant (home-cooked or store-bought)
- Driving a congregant to a local doctor's appointment/hospital
- Helping with Shiva preparations by delivering a store bought meal or house sitting during the funeral service
- Celebrating a simcha by writing a personal note or delivering a baby gift package provided by the Simcha Committee
- Joining the Knitting Mavens by making a healing wrap or baby blanket
- Serving on the Chesed Committee to continue finding new ways of community caring

Name: \_\_\_\_\_

Phone: \_\_\_\_\_

E-mail Address: \_\_\_\_\_

**\*Note:** If you express interest in Chesed Committee volunteer activities, you will receive a telephone call or an e-mail requesting your assistance when the need for support arises. You may decide at that time whether you are able to help.

# Y3K Tutor In Your Home®



**SPECIAL ED. REGULAR ED.**

- \* **ADD / ADHD**
- \* **Asperger's**
- \* **Gifted**
- \* **Autism**
- \* **Behavioral**
- \* **Homework**
- \* **Organization**
- \* **Study Skills**
- \* **All Subjects**
- \* **Pre-K to Adult**

**MCAS REVIEW**

**781-492-8700**

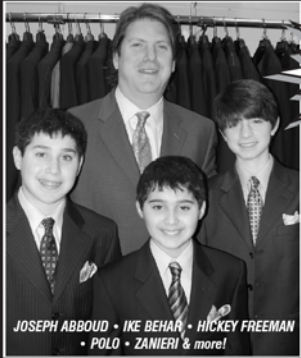
**Y3KTutorInYourHome.com**

See Website for Treating ADD, ADHD, & Dyslexia without Medication



# One Stop Shopping for Boys & Young Men

We've Suited Up Thousands of Bar Mitzvah Boys!



LARGEST SELECTION IN THE GREATER BOSTON AREA!

Boys Suits from \$149<sup>90</sup>

Boys Blazers from \$99<sup>90</sup>

Free Tailoring Included\*  
SIZES 8-22 REGULAR & HUSKY  
\*BASIC ALTERATIONS

JOSEPH ABBOUD • IKE BEHAN • HICKEY FREEMAN  
• POLO • ZANIERI & more!

## SIMON & SONS

210 Needham Street • Newton, MA • 617-969-8844

HOURS: Monday, Tuesday, Friday, Saturday 10AM-6PM  
Wednesday & Thursday 10AM-8PM • Sunday 12PM-5PM

# Harvey's Hardware

## "Everything In Hardware"

1004 Great Plain Ave.  
Needham

781-444-4515

**SPORTS & CONCERT TICKET DISPLAYS**

**THAT'S MY TICKET**

GET 10% OFF  
USE COUPON CODE: SHALOM  
WWW.THATSMYTICKET.COM

## BREZNIAK RODMAN LEVINE-BRISS FUNERAL DIRECTORS

Graveside • Temple • Chapel

Funeral arrangements made in the convenience of your home or our chapel.

Newton: 617-969-0800

South Shore: 781-963-2900

Nationwide: 800-554-2199

Member of National Independent Jewish Funeral Directors.

## LEVIN LAW OFFICES

CHARLES R. LEVIN, ESQ.  
JONATHAN S. LEVIN, ESQ.

10 Kearney Road, Ste. 305 Needham, MA. 02494

Ph. 781.449.7400 Fax 781.449.6299

[www.levinlawoffice.com](http://www.levinlawoffice.com)

Real Estate, Estate Planning & Administration,  
Family Law, Commercial & Business Matters,  
Bankruptcy/Debt Consolidation, Landlord/Tenant

## TEAM LIEB



A family serving families with 50 years of combined Realtor experience.

Jeffrey Lieb, CRS, GRI, ABR  
Harriet Lieb, CRS, GRI, ABR

REALTY CONSULTANTS  
The Key to Satisfaction

781-449-3200

20 Oak Street • Needham, MA 02492 • [jefflieb@realtor.com](mailto:jefflieb@realtor.com)

## BostonBlinds®

Custom Window Fashions  
Free In-Home Shopping  
Repair Service

### HunterDouglas

window fashions

Call John Bulian at  
(617) 558-7727

62 Pettee St., Newton Upper Falls  
[www.bostonblinds.com](http://www.bostonblinds.com)

Exceptional Service  
Great Prices



February Scroll  
deadline is  
January 4



**RSVP!**  
*For all your stationery needs*

**Mindy Berg**

31 Baldpate Hill Road, Newton, Massachusetts 02459  
617.571.5858 • fax: 617.641.2020 • [RSVPmindy@aol.com](mailto:RSVPmindy@aol.com)  
[www.rsvp2me.com](http://www.rsvp2me.com)



**Asset Mortgage Group**

**Loren J. Shapiro**

[lshapiro@assetmortgage.net](mailto:lshapiro@assetmortgage.net)  
[www.assetmortgage.net](http://www.assetmortgage.net)

Main: 508.652.0700 x.103

Cell: 781.589.5550

Fax: 508.652.0703

209 West Central Street, Suite 220, Natick, Massachusetts 01760  
Massachusetts License #MC3382

Barbara A. Levine | David R. Decter | Paul R. Levine 1921-2003

Services continue under the direction of Barbara Levine, Owner

Graveside | Temple | Chapel | Nationwide

CHAPELS  
**LEVINE**

OUR TRADITION CONTINUES

one family, one chapel for one hundred and eleven years

470 Harvard Street | Brookline MA 02446 | 617-277-8300 | 800-367-3708

Jill Lerner

Melissa Silk

★ *Uniquely You, Inc.* ★

★ *Event and Party Planning* ★

★ *Specializing in Bar and Bat Mitzvahs*  
*Dazzling Décor* ★ *Custom Creative Centerpieces*  
*Complimentary Initial Consultation* ★

Phone: 781-431-8170 ★ Fax: 781-431-8171 ★ Email: [nyevents@aol.com](mailto:nyevents@aol.com)

**INVITATIONS ETC.**

by Marjorie Golden

*A 40 year family tradition of creative excellence  
Designed to excite every taste and style*

781-400-5514

Bridle Trail Road  
Needham, MA

[www.marjoriegolden.com](http://www.marjoriegolden.com)

**ONE2ONE BODYSCAPES**  
The Personal Training Center

Experience One on One Personal Training  
in a Comfortable and Relaxed Environment.  
No Membership Fee. Hours to Meet Your Needs.  
Customized Fitness Plans. Sessions by Appointment Only.

Receive up to \$150 Off Your First Package with this Ad  
Gift Certificates Available

1110 Great Plain Ave, Needham 781.455.1121  
[www.one2onebodyscapes.com/needham](http://www.one2onebodyscapes.com/needham)

**BEST OF  
BOSTON  
2006**  
Awarded by Boston magazine  
Best Personal Trainers

**PERSONALIZED WEIGHT LOSS**

Individual, Family, and Group Counseling

**SANDY PRESSER**

**617-965-4822**

[sipresser@aol.com](mailto:sipresser@aol.com)

**PrintCentre**



**PRINTING**  
IS OUR BUSINESS  
**SERVICE**  
IS OUR SPECIALITY

4 Arlington Road, Needham, MA, 02494  
Tel: 781-449-6100 Fax: 781-449-6112  
[www.printcentre.net](http://www.printcentre.net) [info@printcentre.net](mailto:info@printcentre.net)

Conveniently located at the intersection of Rte. 128 and Highland Ave. Directly behind Staples.

# Temple Calendar - February 2010

Sunday	Monday	Tuesday	Wednesday	Thursday	Friday	Saturday																																																																																												
	<b>1</b>	<b>2</b>	<b>3</b>	<b>4</b>	<b>5</b>	<b>6</b>																																																																																												
	9:00 AM CC Israeli Dancing-CR 9:30 AM Rabbinical Study Grp-LIB 9:30 AM TBS/IVS Job Club-SH 11:45 AM CC Closed, No LB 12:00 PM CC Staff Mtg-GCR 5:00 PM B/M Rehearsal-Sanct. 7:00 PM B/M Rehearsal-Sanct. 7:30 PM RS Comm Mtg-Rm 12	9:00 AM GC Program and Luncheon-SH, CR 2:30 PM B/M Rehearsal-Sanct. 8:00 PM Youth Dinner-CR 6:30 PM 11th Gr. CI-Rm 11 6:30 PM 12th Gr. CI-Rm 12 6:30 PM Conf CI-Rm 13 8:30 PM RS Cooking-CR,A 7:00 PM Historical Ed Mtg-LIB 7:30 PM EC Dr. Search-GCR 7:30 PM Israeli Folkdancing - SH 7:30 PM Winter Special w/ Jingle-CR	8:30 AM PTC Mtg-CR 12:00 PM Staff Mtg-LIB 2:30 PM B/M Rehearsal-Sanct. 4:00 PM B/M Final Rehearsal-Sanct. 7:30 PM Choir Rehearsal-SH 7:30 PM Sisterhd Board Meetings-LIB	11:30 AM Bible Journey C3-Rm 13 2:00 PM mtg w/day 2:30 PM B/M Rehearsal-Sanct. 3:30 PM RS T'fillah/Music-Sanct. 5:40 PM B/M Rehearsal-Sanct. 5:40 PM Sh'arim Hebrew 1-Rm 14 6:30 PM Commerce and Community Proj.-CR 7:30 PM Worship Comm Mtg-Rm 15	6:15 PM Congregational Shabbat Dinner-CR 7:15 PM Simchat Shabbat Service-Sanct 4th Grade Participants	8:30 AM Shacharit Service-CR 9:00 AM Torah Study-CR 10:00 AM Temple Tots Shabbaton-SH 5:00 PM B'nei Mitzvah-Jake Hurwitz and Rebecca Revzin-Sanct 7:00 PM Hurwitz Evening Party - SH, Atr																																																																																												
<b>7</b>	<b>8</b>	<b>9</b>	<b>10</b>	<b>11</b>	<b>12</b>	<b>13</b>																																																																																												
7:00 AM BESTY Bagel Day-Atr 8:45 AM RS T'fillah/Music-Sanct. 9:00 AM Bagels and Booktalk-SH 12:00 PM Intro to Judaism-CR 1:30 PM Madrichim-Rms 11&14 3:00 PM Rosh Hodesh-Rm 15&YL Ity Bity BESTY Event-OOT	9:30 AM Rabbinical Study Grp-LIB 9:30 AM TBS/IVS Job Club-SH 1:30 PM Rappit' with the Rabbi-LIB 5:00 PM B/M Rehearsal-Sanct. 6:30 PM CC Class-GCR 7:00 PM B/M Rehearsal-Sanct 7:30 PM Social Actn Mtg-Rm 15	12:00 PM Staff Mtg-LIB 2:30 PM B/M Rehearsal-Sanct. 7:00 PM Governance Comm Mtg-LIB 7:30 PM College Night-CR 7:30 PM Israeli Folkdancing - SH	2:30 PM B/M Rehearsal-Sanct. 3:30 PM Rappit' with the Rabbi-LIB 4:00 PM B/M Final Rehearsal-Sanct. 6:00 PM RS Staff Mtg-Rm 11 6:15 PM Exec Bd Mtg-GCR 7:45 PM BOT Mtg-CR	2:30 PM B/M Rehearsal-Sanct 3:30 PM RS T'fillah/Music-Sanct. 5:40 PM B/M Rehearsal-Sanct. 5:40 PM Sh'arim Hebrew 1-Rm 14 7:00 PM Speaker: Congressman Lynch-Sanct, SH No 6th Gr Class	6:15 PM Shabbat Service-Sanct CC Closes Early-No LB	8:30 AM Shacharit Service-CR 9:00 AM Torah Study-CR <div style="border: 1px solid black; padding: 2px; text-align: center;">11th-12th Gr. Trip to the South</div>																																																																																												
<b>14</b>	<b>15</b>	<b>16</b>	<b>17</b>	<b>18</b>	<b>19</b>	<b>20</b>																																																																																												
	Temple Office Closed		7:30 PM Choir Rehearsal-SH	2:00 PM mtg w/day 6:30 PM Commerce and Community Project-CR,A and CR,B	6:15 PM Shabbat Service-Sanct Torah Service	8:30 AM Shacharit Service-CR 9:00 AM Torah Study-CR																																																																																												
11th-12th Gr. Trip to the South																																																																																																		
February Break - No RS or CC																																																																																																		
<b>21</b>	<b>22</b>	<b>23</b>	<b>24</b>	<b>25</b>	<b>26</b>	<b>27</b>																																																																																												
4:00 PM Triple Chai Movie and Dinner-CR <div style="border: 1px solid black; padding: 2px; text-align: center;">February Break - No RS or CC</div>	9:30 AM Rabbinical Study Grp-LIB 9:30 AM TBS/IVS Job Club-SH 5:00 PM B/M Rehearsal-Sanct. 7:00 PM B/M Rehearsal-Sanct CC and RS Classes Resume	2:30 PM B/M Rehearsal-Sanct. 3:30 PM Sofer Visit 6:00 PM Youth Dinner-CR 6:00 PM Wilderness Expl-OOT 8:30 PM 11th Gr. CI-Rm 11 6:30 PM 12th Gr. CI-Rm 12 6:30 PM Conf CI-Rm 13 6:30 PM RS Cooking-CR,A 7:00 PM Breithd Handy Man Workshop-Rm 15 7:30 PM Israeli Folkdancing - SH	12:00 PM Staff Mtg-LIB 2:30 PM B/M Rehearsal-Sanct. 4:00 PM B/M Final Rehearsal-Sanct. 6:00 PM Youth Commission Mtg-GCR 7:30 PM Adult Ed Comm Mtg-Rm 15 7:30 PM Choir Rehearsal-SH 7:30 PM Membership Comm Mtg-GCR	11:30 AM Bible Journey C3-Rm 13 2:30 PM B/M Rehearsal-Sanct. 3:30 PM RS T'fillah/Music-Sanct. 5:40 PM B/M Rehearsal-Sanct 5:40 PM Sh'arim Hebrew 1-Rm 14 7:00 PM Sisterhd Ask The Rabbi's Night-CR	6:15 PM Shabbat Service-Sanct 6:30 PM Tot Shabbat - CR 7:15 PM Patkin Shabbat Dinner - SH	8:30 AM Shacharit Service-CR 9:00 AM Torah Study-CR 11:00 AM Bar Mitzvah-Jake Patkin 7:00 PM All Temple Fundraiser 7:30 PM Erev Purim Shpiel-SH																																																																																												
<b>28</b>			<div style="border: 1px solid black; padding: 5px; display: inline-block;">                         January  <table style="font-size: small; border-collapse: collapse;"> <tr><td>S</td><td>M</td><td>T</td><td>W</td><td>T</td><td>F</td><td>S</td></tr> <tr><td></td><td></td><td></td><td></td><td></td><td>1</td><td>2</td></tr> <tr><td>3</td><td>4</td><td>5</td><td>6</td><td>7</td><td>8</td><td>9</td></tr> <tr><td>10</td><td>11</td><td>12</td><td>13</td><td>14</td><td>15</td><td>16</td></tr> <tr><td>17</td><td>18</td><td>19</td><td>20</td><td>21</td><td>22</td><td>23</td></tr> <tr><td>24</td><td>25</td><td>26</td><td>27</td><td>28</td><td>29</td><td>30</td></tr> <tr><td>31</td><td></td><td></td><td></td><td></td><td></td><td></td></tr> </table> </div>		S	M	T	W	T	F	S						1	2	3	4	5	6	7	8	9	10	11	12	13	14	15	16	17	18	19	20	21	22	23	24	25	26	27	28	29	30	31							<div style="border: 1px solid black; padding: 5px; display: inline-block;">                         March  <table style="font-size: small; border-collapse: collapse;"> <tr><td>S</td><td>M</td><td>T</td><td>W</td><td>T</td><td>F</td><td>S</td></tr> <tr><td></td><td>1</td><td>2</td><td>3</td><td>4</td><td>5</td><td>6</td></tr> <tr><td>7</td><td>8</td><td>9</td><td>10</td><td>11</td><td>12</td><td>13</td></tr> <tr><td>14</td><td>15</td><td>16</td><td>17</td><td>18</td><td>19</td><td>20</td></tr> <tr><td>21</td><td>22</td><td>23</td><td>24</td><td>25</td><td>26</td><td>27</td></tr> <tr><td>28</td><td>29</td><td>30</td><td>31</td><td></td><td></td><td></td></tr> </table> </div>		S	M	T	W	T	F	S		1	2	3	4	5	6	7	8	9	10	11	12	13	14	15	16	17	18	19	20	21	22	23	24	25	26	27	28	29	30	31				
S	M	T	W	T	F	S																																																																																												
					1	2																																																																																												
3	4	5	6	7	8	9																																																																																												
10	11	12	13	14	15	16																																																																																												
17	18	19	20	21	22	23																																																																																												
24	25	26	27	28	29	30																																																																																												
31																																																																																																		
S	M	T	W	T	F	S																																																																																												
	1	2	3	4	5	6																																																																																												
7	8	9	10	11	12	13																																																																																												
14	15	16	17	18	19	20																																																																																												
21	22	23	24	25	26	27																																																																																												
28	29	30	31																																																																																															
8:45 AM RS T'fillah/Music-Sanct. 9:00 AM Adult Megillah Reading - CR 12:15 PM &E 12:45 PM Kids Purim Shpiel-Sanct 1:15 PM Purim Carnival-SH, Atr																																																																																																		

NON-PROFIT  
U.S. POSTAGE  
**PAID**  
BOSTON, MA  
PERMIT NO. 58044

## Temple Beth Shalom

670 Highland Avenue  
Needham, MA 02494

781-444-0077 - Temple Office  
781-449-3274 - Fax Number

781-444-0388 - Religious School Office  
781-449-3016 - Children's Center

e-mail: [tbshalom@tbsneedham.org](mailto:tbshalom@tbsneedham.org)  
[www.tbsneedham.org](http://www.tbsneedham.org)

*Member, Union for Reform Judaism;  
Affiliated with Synagogue Council  
of Massachusetts*